

TECHUPDATES

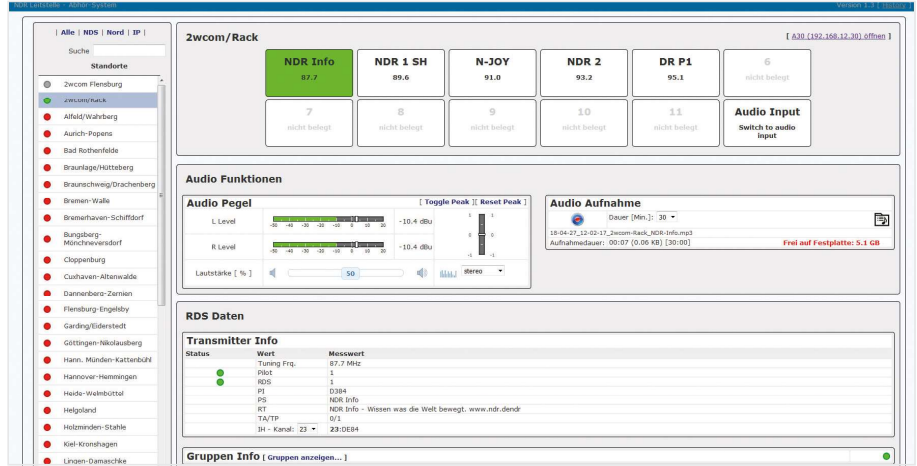
2WCOM A30 OFFERS ENHANCED MONITORING

2wcom says its A30 monitoring receiver now goes a step further. To avoid penalties with regulatory authorities regarding MPX power and MPX peak signal deviation, the device offers a detailed graphical user interface and historical logs for all activated FM tuners.

If a measurement exceeds a user-definable threshold, an alarm can be forwarded via SNMP, email and/or relay and will be stored in a separate alarm log (time stamp, type of alert and the corresponding frequency). For issues reported by third parties, engineers can analyze the log by date and time parameters, MPX power as well as MPX peak signal deviation and store the results.

The A30 provides useful features for efficient monitoring of radio frequencies and fleet control. Its remote management solution enables operators to manage and evaluate all A30 monitoring receivers in one stop via location/device management. Moreover, monitoring by live listening is possible for each individual A30 in a fleet and additionally the respective MP3 audio stream of a monitored station can be recorded and stored.

Other targets include analog/digital audio input, MPX input, DAB input, analog/digital audio MPX outputs, GPIs, SNMP and two parallel FM streams. It is possible to configure two built-in FM tuners to monitor two separate stations or the second FM tuner can operate in scan-mode, monitoring up to 30 frequencies (round-robin). Technicians can benefit from accurate measurements of FM parameters like



RF level, "no pilot" detection, pilot deviation and RDS parameters (RDS deviation, PI, PS, PTY, RT, TA, TMC, etc.). In addition, operators can use an optional DAB+ tuner to monitor a DAB+ multiplex e.g. RF, SNR, CNR, FIC quality, dynamic label, or slide show.

For information, contact 2wcom in Germany at +49-461-662830-0 or visit www.2wcom.com.



SERIES
CORTEX

Remote Site Management System



davicom.com



T. 1 877 282-3380

dvsales@davicom.com